



New CorelDRAW® Graphics Suite X7

Gives Users the Power to Design Their Way

*Redesigned User Interface,
Customizable Workspaces and
Enhanced Fill Options Help Users
Add Speed and Power to Their Workflow*

Editor's Note: To give our readers a concise but thorough introduction to this new release from Corel, we are providing you with three features – the official launch release here, followed by *Top 10 Reasons to Upgrade to Corel X7*, and finally a pictorial review and description of many of the key components of this new version. In the following months, we will continue with an in-depth review.

OTTAWA, ON – March 27, 2014 – Corel® today introduced CorelDRAW Graphics Suite X7, the latest version of its flagship graphics suite. With a redesigned and highly customizable user interface, the suite is tailored to each user's workflow, offering new ways to increase productivity during every step of the design process.

"During the creation of CorelDRAW Graphics Suite X7, we solicited customer input more than ever before," said Gérard Métrailler, Senior Director, Product Management – Graphics, Corel. "Each new feature is the result of direct customer feedback. Our goal is to ensure that CorelDRAW users can get the job done as fast as possible. So, we let them decide how they work with CorelDRAW Graphics Suite X7."

This major release features powerful fill capabilities, high DPI, multi-monitor and touchscreen compatibility, and more ways to share content with the CorelDRAW community. In addition, multi-core and native 64-bit support allows users to run multiple

applications and process large files with ease. The program will help users get started quickly, complete projects efficiently, and make the design process their own.

New/Enhanced Time-Saving Features in CorelDRAW Graphics Suite X7:

- **Workspace Selection:** Choose between six pre-set workspaces based on proficiency levels and specific tasks: Lite, Default, Classic, Adobe Illustrator, Photoshop, Advanced Page Layout or Advanced Illustration
- **Quick Customization:** Tailor the workspace to reflect any workflow by simply adding or removing dockers, tools and other items
- **Fountain Fills:** Get better results faster with total control over fills and transparency; create elliptical and rectangular fountain fills, control transparency within the individual colors of a fountain fill, repeat fills within objects and adjust a fill's angle
- **Font Playground:** Quickly and easily browse, experiment with and choose the perfect font
- **Multiple Document Interface:** Work with and switch between numerous documents, across multiple monitors, in a tabbed view to streamline any project
- **Photo-Editing Tools in PHOTO-PAINT:** Create unique images with pressure-sensitive liquid tools (Smear, Attract and Twirl) and



Click ads to go directly
to advertiser's web site.

camera effects (Bokeh blur, Sepia Toning and Time Machine)

- **High DPI Support:** Get a consistent appearance across devices with high DPI monitors; the interface is easily adapted for touchscreen capability, making it compatible with the latest PCs, laptops and tablets
- **QR Code Generator:** Create customized QR codes that feature colors, images and text; with one click, make sure the QR code is validated for all mobile devices
- **Alignment Guides:** Position objects quickly and accurately with suggested alignments to nearby objects
- **OpenType® Support, including Asian Text:** Save time with extended support for OpenType fonts, including Asian fonts, for full control over typography
- **Built-in Content Exchange:** Collaborate easily by sharing vector, bitmap and fountain fills with the community through this online repository, integrated with Corel® CONNECT™

Also Available Today: Companion Apps from Corel

- **NEW – Patterns (iPhone iOS 7):** Create one-of-a-kind patterns from digital photos, then share and sync these patterns with CorelDRAW X7 through the Corel Content Exchange, or with other applications such as Photoshop. Available for free through the Apple Store
- **ENHANCED – Designs (Windows 8.1):** Find and share images from the Corel Content Exchange, iStockPhoto, Fotolia and other galleries; synchronize them directly with CorelDRAW through Microsoft OneDrive. This app is free through the Windows Store

CorelDRAW Graphics Suite X7 Includes:

- **CorelDRAW® X7:** Intuitive vector-illustration and page-layout application
- **Corel® PHOTO-PAINT™ X7:** Professional image-editing application
- **Corel® PowerTRACE™ X7:** Bitmap-to-vector tracing utility (included in CorelDRAW X7)
- **Corel® CONNECT™ X7:** Browser to access digital content in the Content Exchange and on a local computer
- **Corel® Website Creator™:** Website-design application
- **Corel® CAPTURE™ X7:** One-click screen capture utility
- **PhotoZoom Pro 3:** Plug-in to export and enlarge digital images from Corel PHOTO-PAINT
- **ConceptShare:** Collaboration tool for sharing artwork and ideas with colleagues and clients

CorelDRAW Graphics Suite X7 also includes 10,000 clipart and digital images, 2,000 high-resolution digital photos, 1,000 OpenType fonts, 350 professionally designed templates, 2,000 vehicle templates, 800 frames and patterns, over five hours of

training videos and much more.

For a full list of everything included in CorelDRAW Graphics Suite X7 and to download a free 30-day trial, please visit www.corel.com/coreldraw.

Corel Gives Users Choice

Corel understands that purchase preference varies between customers. Therefore, customers can purchase CorelDRAW Graphics Suite X7 in three unique ways:

- **Perpetual License:** Make a one-time payment and own the product permanently; available as a box or download version
- **Premium Membership:** Add a Premium Membership to a perpetual license for a nominal fee and receive early access to new features, exclusive content and the next major release of CorelDRAW Graphics Suite at no extra cost
- **Subscription:** Pay a monthly or annual fee and use the product for as long as payments are made; receive the same benefits as Premium Membership

Availability and Pricing

CorelDRAW Graphics Suite X7 is now available in English, German, Italian, French, Spanish, Brazilian-Portuguese, Dutch, Polish, Czech, Russian, Chinese Simplified, Chinese Traditional and Japanese. It can be downloaded at www.corel.com/coreldraw. Shipping begins April 7, 2014. In the U.S., the full version is priced at \$499 USD and the upgrade is \$199 USD. Subscription is available for \$24.95 USD per month or \$198 USD per year. Premium Membership is available for \$99 USD per year. Commercial and educational volume licenses are also available.

About Corel

Corel is one of the world's top software companies providing some of the industry's best-known graphics, productivity and digital media products. Boasting the most comprehensive portfolio of innovative software, they've built a reputation for delivering solutions that are easy to learn and use, helping people achieve new levels of creativity and productivity. The industry has responded with hundreds of awards for innovation, design and value.

Used by millions of people around the world, product lines include CorelDRAW® Graphics Suite, CorelDRAW® Technical Suite, Corel® Painter®, Corel® PaintShop® Pro, Corel® VideoStudio®, Corel® WordPerfect® Office, Corel® PDF Fusion and CorelCAD™. For more information on Corel, please visit www.corel.com.



CorelDRAW®
Graphics Suite X7



CorelDRAW® Graphics Suite X7 Top 10 Reasons to Upgrade

1. New! Redesigned interface and fully customizable workspaces

Design your way with CorelDRAW® Graphic Suite X7, thanks to its redesigned, completely customizable interface. We've streamlined our tools and settings to reflect your natural workflow, so everything is where you need it, when you need it. Choose between Lite, Classic or the Default workspace to get started smoothly, then use the new quick customize feature to tailor your toolbox and property bars to suit your needs. New advanced workspaces—Page Layout and Illustration—are available to help keep all your favorite tools organized and easily accessible. Former Adobe Creative Suite users can also set their workspace to look like Illustrator or Photoshop, making it an easier transition.

2. New! Total control over fills and transparency

The sky's the limit to what you can do with patterns in CorelDRAW Graphics Suite X7. We've created our most powerful fill and transparency engine ever, giving you complete control over your fountain and pattern fills. Create elliptical and rectangular fountain fills, control transparency within the individual colors of a fountain fill, repeat a fountain fill within an object and more. Browse and search for vector and bitmap fills created by other community members in the new, integrated Content Exchange, or share your own.

3. New! Powerful tools for advanced photo editing

Explore all-new special effects, including four new pressure-sensitive Liquid tools—Smear, Attract, Repel and Twirl—and new camera effects, such as Bokeh blur, Colorize, Sepia toning and Time Machine, to create unique images in Corel® PHOTO-PAINT™ X7. With support for the latest PSD files, plus extensive RAW file support for over 300 types of cameras, you have even more ways to enrich your images.

4. New! Easy font preview and advanced character options

Find the perfect font for any project using the new Font Playground. This interactive docker in CorelDRAW and Corel PHOTO-PAINT lets you preview and experiment with different fonts before bringing them into your design. When you choose an OpenType font, the Font Playground also shows you advanced OpenType features that you can apply to sample text. The revamped Insert Character docker automatically displays all the characters, symbols and glyphs associated with a selected font, making it easier than ever to find and insert them into your project.

5. New and enhanced! Precise layout and drawing tools

Make sure every element on the page is right where you want it with enhanced layout features in CorelDRAW Graphics Suite X7. The new Alignment Guides help you position objects quickly, appearing on the fly with suggested alignments to other nearby objects.

The new Outline Position options in CorelDRAW X7 let you specify whether an outline is positioned inside the object, outside the object, or an equal combination of both. Plus, all-new in CorelDRAW X7, create and add unique QR codes to your designs. Add text, images, and colors to your QR codes to make them stand out, or blend in—the options are endless!

6. Enhanced! Easy, professional website design

Corel® Website Creator™ continues to make website design easy for everyone. With dozens of new templates and SiteStyles, enhanced support for CSS3 and new HTML5 capabilities, you can quickly design, build, and maintain interactive and eye-catching websites without learning how to code. Discover the smart way to build your web presence!

7. New! High-resolution and multi-display support

Moving your work across multiple screens doesn't need to be a headache with new multi-display support. Now you can undock your project, dockers, and toolbars and drag them outside the application window. The new tabbed user interface lets you combine multiple documents into a single window. Plus, all of the suite's applications have been optimized for high DPI displays, so the interface will appear crisp and legible on high resolution displays.

8. Enhanced! Compatibility with the latest PSD, AI, PDF and RAW formats

No matter what kind of file format you're working with, CorelDRAW Graphics Suite X7 has you covered. Featuring support for more than 100 file formats, including the latest AI, PSD, PDF, JPG, PNG, SVG, DWG, DXF, EPS, TIFF, DOCX and PPT formats, plus extensive RAW file support for over 300 types of cameras, including the latest and greatest.

9. Enhanced! Connect with passionate creative community through the built-in Content Exchange

CorelDRAW Graphics Suite X7 now features the interactive Content Exchange, an online repository that's fully integrated with the suite's applications. Share vector, bitmap and fountain fills with the CorelDRAW community from right within the application. Get inspired, showcase your handiwork and upvote the ones you like best. Plus, you also have access to tons of content through our online portal—fonts, fills, templates, photos, clipart and more.

10. New! More learning materials and help from the experts

Even seasoned graphics professionals may want to learn a new trick. We're here to help with our growing library of dynamic learning materials, including video tutorials, webinars and insights from the experts. Plus, our CorelDRAW Hints offer extensive training videos and tips from right within the application.

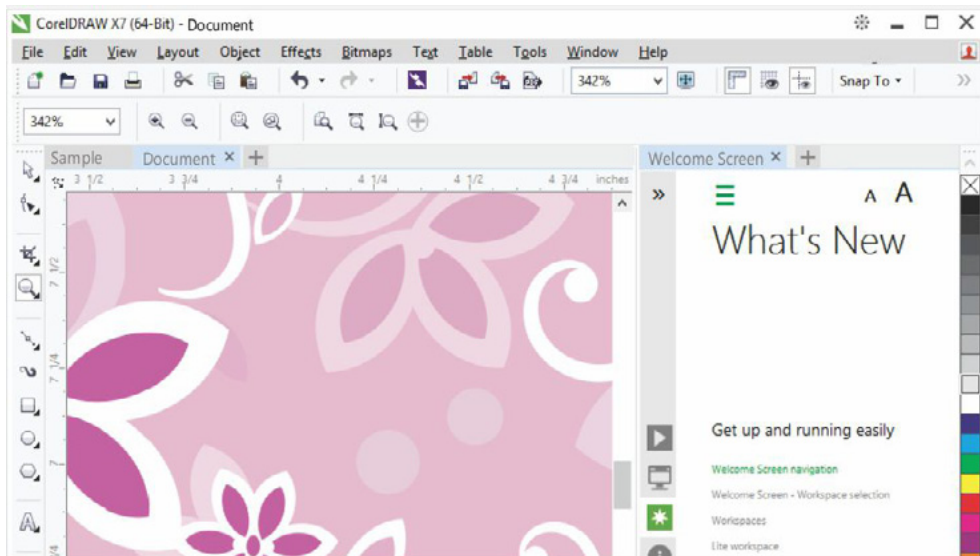
CorelDRAW X7: A Pictorial Review

In this concise review, we will provide screen shots and brief descriptions of some of the most significant new features of CorelDRAW Graphics Suite X7. This will give you an idea of what's new, and we hope, whet your appetite to check out the full version via free download.

The new features can be categorized along four themes: More Custom Workspaces, More Speed & Efficiency, New Design Tools, and New Ways to Share. Here are the highlights of each theme:

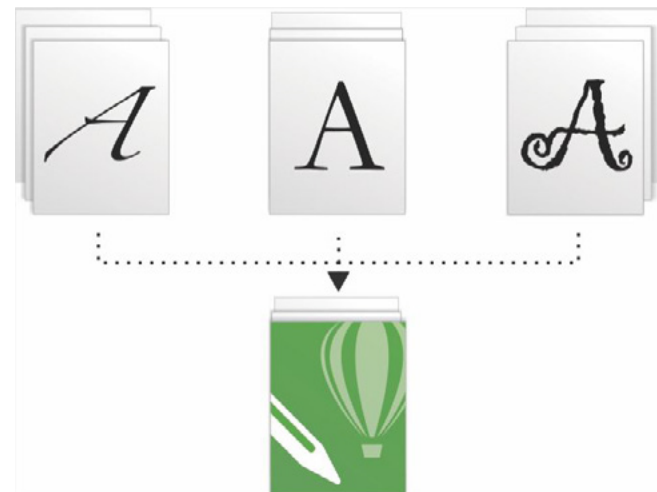
More Custom Workspaces

New! Welcome Screen navigation: The Welcome Screen has been completely redesigned, making it easier to navigate and discover the abundance of available



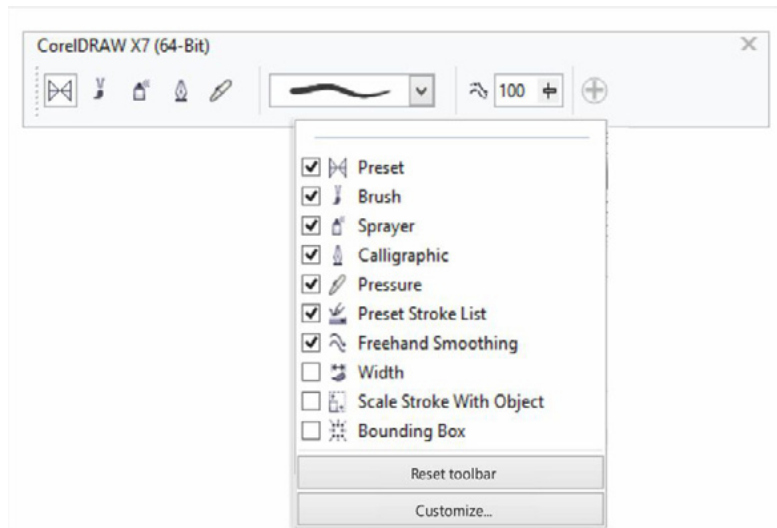
resources, including tabs for Workspace selection, What's New, a Gallery of inspiring user creations, application updates, Tips & Tricks, video tutorials, the CorelDRAW.com community, as well as Membership & Subscription information.

New! Workspaces: A variety of tailor-made, workflow specific workspaces have been introduced to help new users get accustomed to the suite faster and easier. We've worked with professional industry experts who use the suite routinely to arrange tools and features for specific tasks, such as Page Layout and Illustration. For example, there are Page Layout and Illustration workspaces, a Classic option for longtime users, as well as a Lite option for new users.

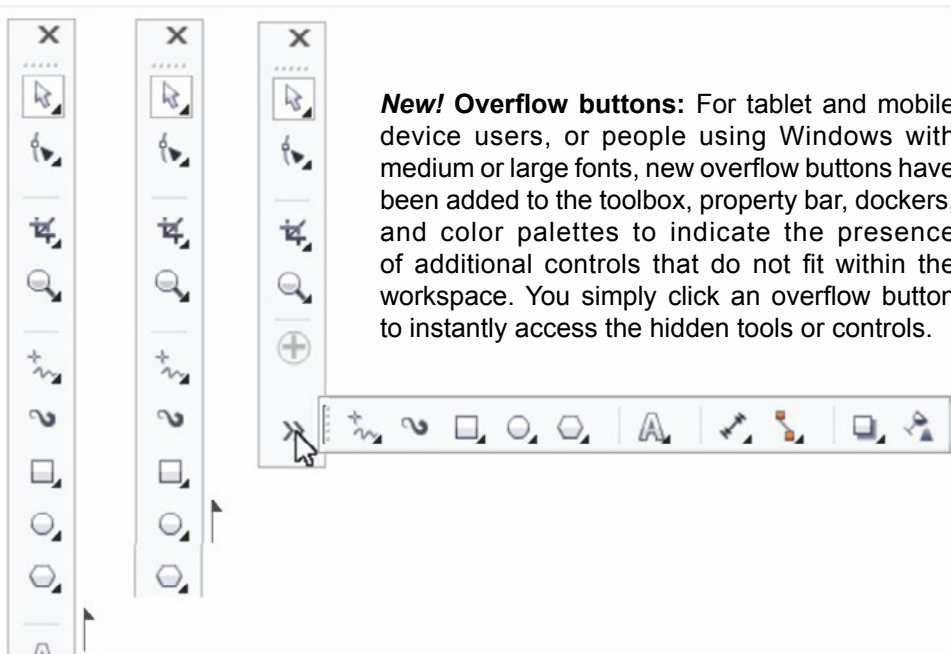


New! Font embedding: You can now embed fonts when you save CorelDRAW documents so that recipients can view, print, and edit the document exactly as designed.



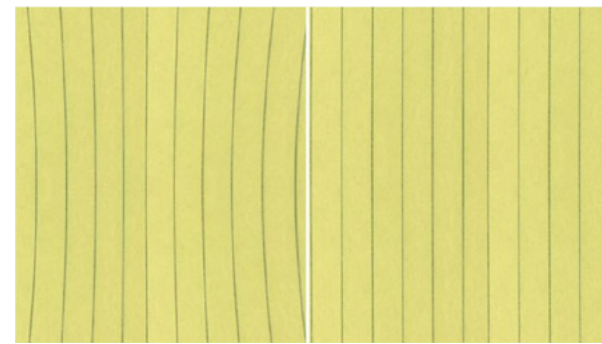


New! Simple customization: The toolbox, docker space, and property bars contain handy new Quick Customize buttons, which will help you tailor the interface to suit your workflow. Available in both CorelDRAW X7 and Corel PHOTO-PAINT X7, these buttons offer a faster and more convenient way to add dockers to your workspace, add or remove tools from the toolbox, and add or remove items from a property bar.



New! Overflow buttons: For tablet and mobile device users, or people using Windows with medium or large fonts, new overflow buttons have been added to the toolbox, property bar, dockers, and color palettes to indicate the presence of additional controls that do not fit within the workspace. You simply click an overflow button to instantly access the hidden tools or controls.

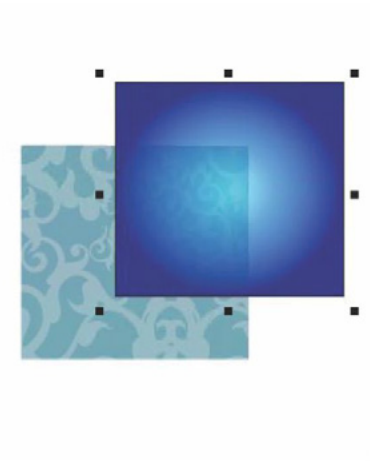
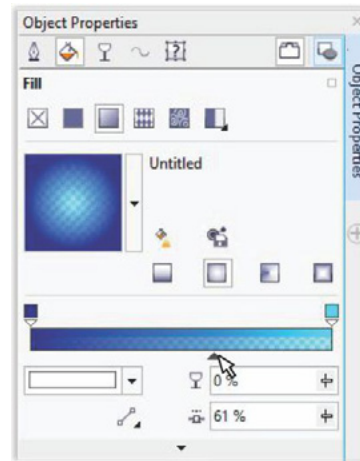
New! Lens corrections: The new Correct lens distortion slider in the Straighten Image dialog box helps you preview and adjust your image to quickly and easily remove pincushion and barrel distortions. Pincushion distortions make photos appear pinched in from the center, while barrel distortions make photos appear pushed out from the center.

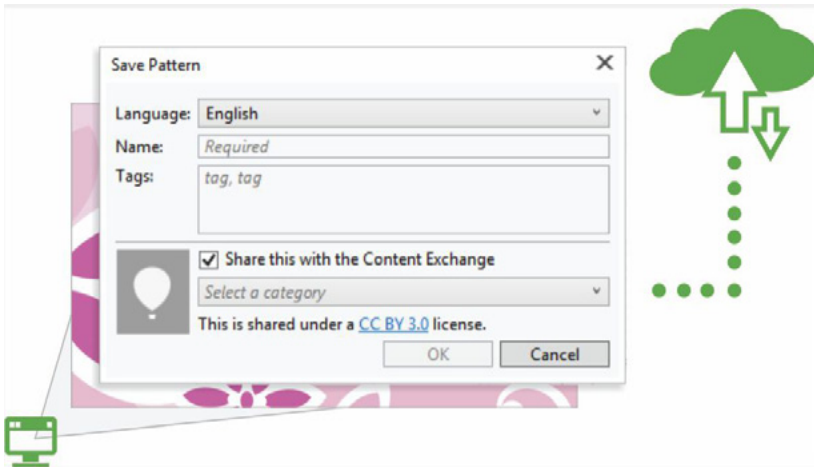


New & Enhanced! Content: CorelDRAW Graphics Suite X7 includes a wealth of project-ready content that you can use to enhance your artwork. The suite's content library includes fonts, both bitmap pattern and vector pattern fills, clipart images, photos, photo frames, templates, objects, interactive text frames, interactive PowerClip frames, image lists, and Artistic Media.

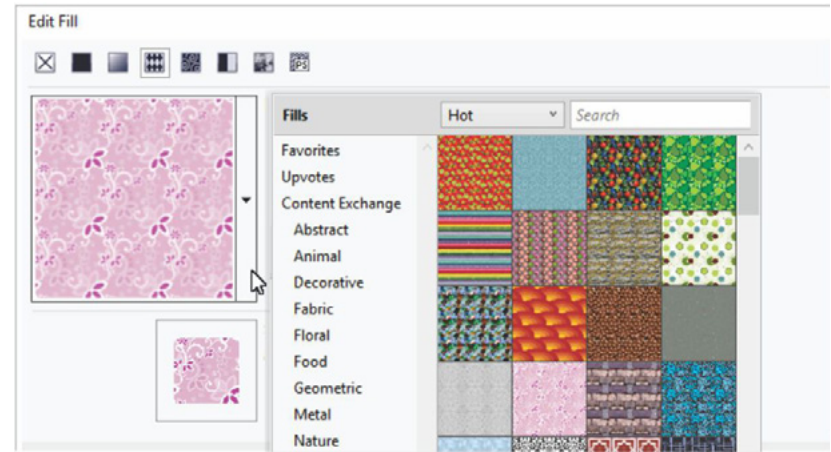
More Speed & Efficiency

New! Fountain fills: You can now create elliptical and rectangular fountain fills, apply transparency to individual color nodes within a fountain fill, repeat a fill within a filled object, adjust a fill's angle of rotation, and smooth the blend transition of a fountain fill. With CorelDRAW X7, you can apply and adjust fountain fills more quickly, accurately, and creatively by using the new interactive controls in the Object Properties docker or the new Edit Fill dialog box. In Corel PHOTO-PAINT X7, the enhanced Edit Fill dialog box provides quick access to all available controls for adjusting fountain fills.

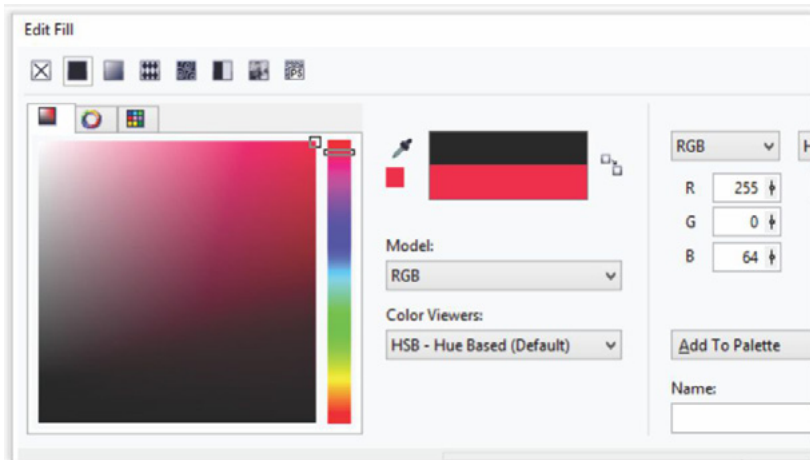




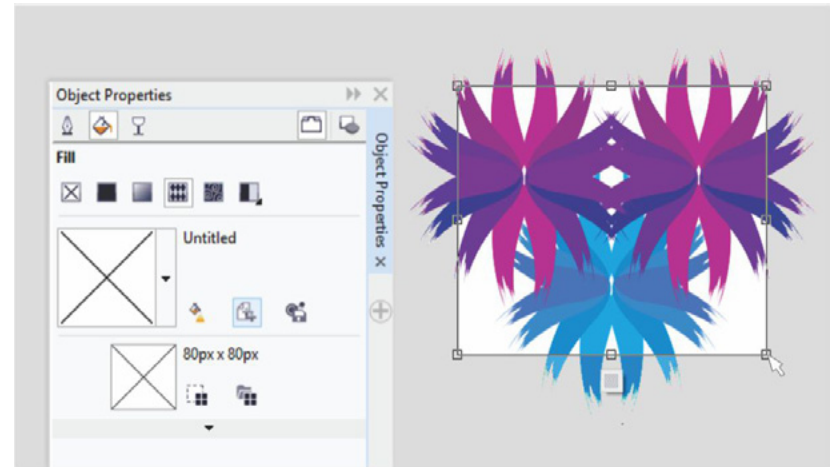
New & Enhanced! Vector and bitmap pattern fills: With CoreIDRAW X7, you can efficiently search for, preview, apply, and interactively transform both vector pattern and bitmap pattern fills by using the enhanced controls in the Object Properties docker. You can also save personally created or modified fills to the new FILL format, which is supported by Patterns, a new iOS app that makes it easy to create seamless bitmap patterns from photos. What's more, patterns saved to the FILL format are easily shared with other CoreIDRAW Graphics Suite users.



New! Fill picker: With both CoreIDRAW X7 and Corel PHOTO-PAINT X7, a new Fill picker makes browsing, searching, previewing, and selecting fills quick and easy. The Fill picker also provides access to both locally stored fills and those available in the Content Exchange.

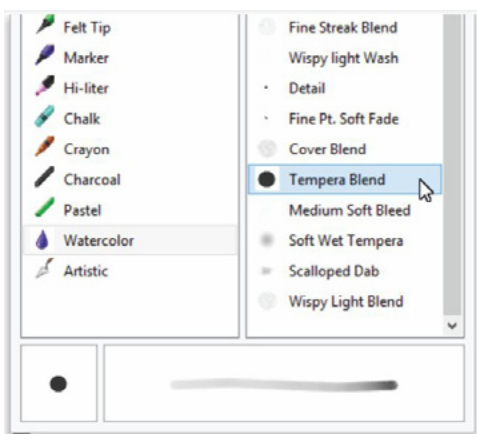
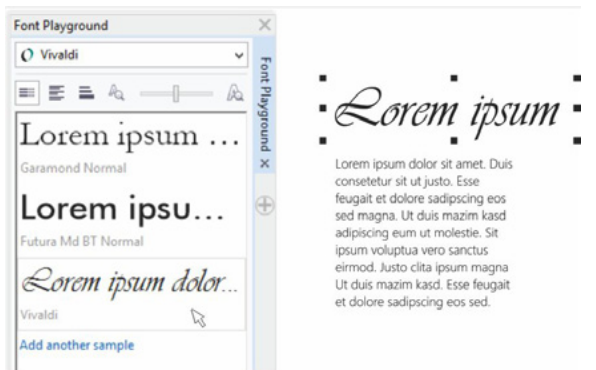


New! Edit Fill dialog box: In both CoreIDRAW X7 and Corel PHOTO-PAINT X7, the new Edit Fill dialog box gives you more efficient access to all available controls for Uniform, Fountain, Vector pattern, Bitmap pattern, Twocolor pattern, Texture, and PostScript fills. With CoreIDRAW X7, the Edit Fill dialog box also provides a real-time preview as you make adjustments.



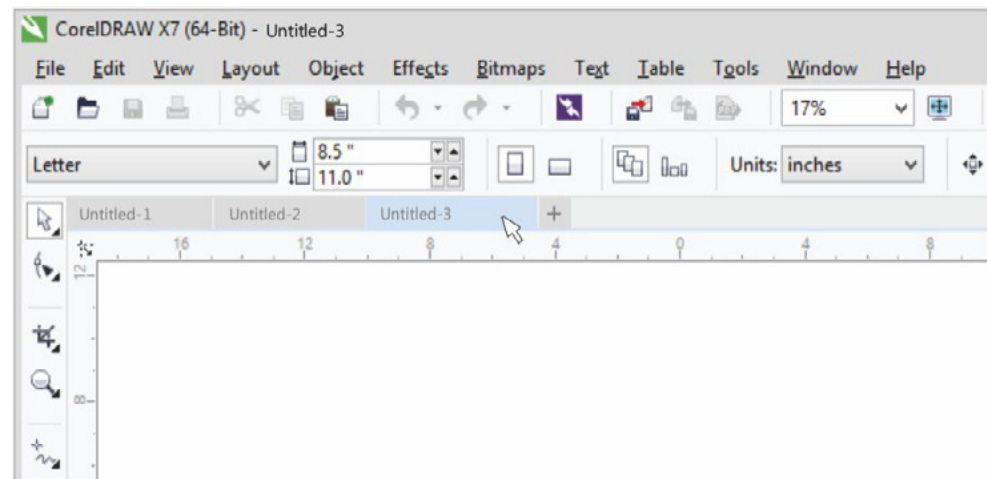
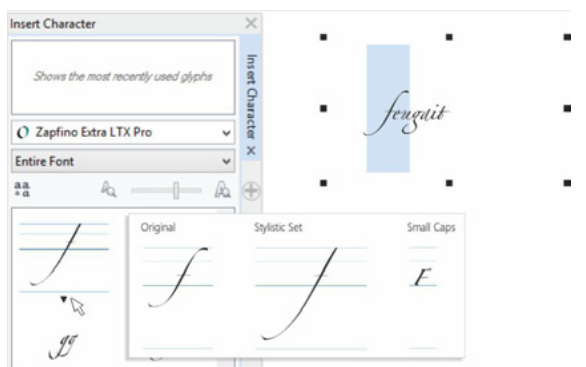
New! Fill creation: In CoreIDRAW X7, you can now instantly create new bitmap pattern and vector pattern fills from selected objects in your workspace. When you have applied a pattern fill, the Object Properties docker presents the New from document button. When you click that button, the cursor changes to the Crop tool so that you can define an area of your workspace to use as a pattern.

New! Font Playground: In both CoreIDRAW X7 and Corel PHOTO-PAINT X7, the new Font Playground docker introduces an easier way to browse, experiment with, and choose the perfect font. You can easily add sample text to view its appearance in different fonts, and a handy Zoom slider lets you quickly adjust the size of sample text.



New! Brush selector: With Corel PHOTO-PAINT X7, the new Brush Selector helps you find the brush you're seeking quicker by combining all brush categories and brush types in one location. It also stores the settings for the last five brushes you've used.

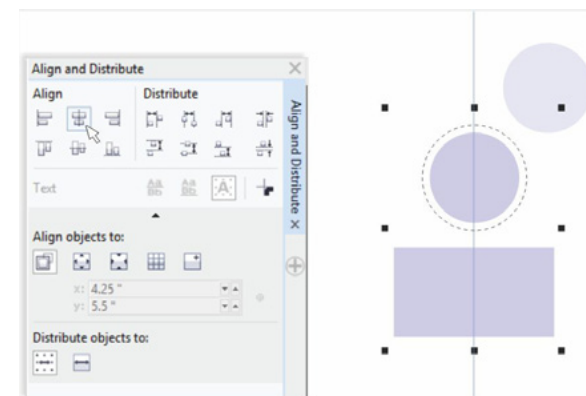
Enhanced! Special characters, symbols, and glyphs: The revamped Insert Character docker presents all characters, symbols, and glyphs associated with a selected font, making it easier than ever to find these items and then insert them in your documents.



New! Multiple document interface: You can now work with multiple documents in a tabbed view, which helps you stay organized and quickly switch between several active documents.

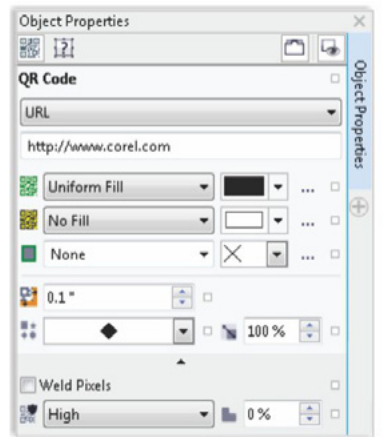
New Design Tools

New! Align and Distribute docker: The new Align and Distribute docker provides quick and easy access to all available alignment options so that you can position objects with precision. Docking the alignment options keeps the drawing window uncluttered, so you can instantly view the effects of any align and distribute modifications. There are also new options that you can use to align and distribute objects from the edge of their outlines. Plus, you can align objects with a reference point by specifying its exact x and y coordinates.

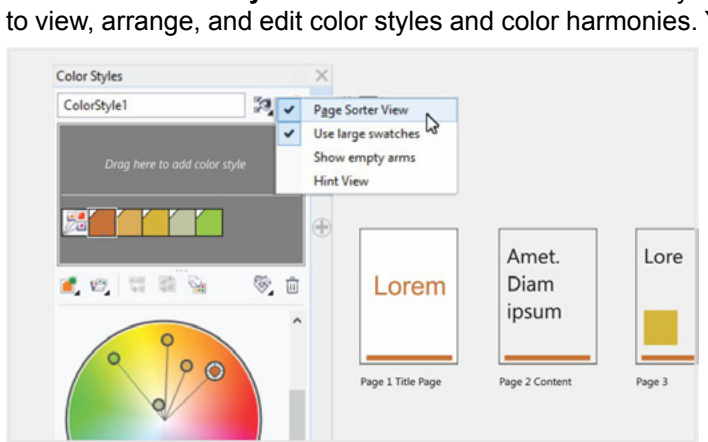


New! QR codes:

With CoreIDRAW X7, you can now create unique, artistic, and scalable QR codes by adding text, colors, and images. Popular in consumer advertising and packaging, QR codes give smartphone users quick access to a brand's website which can offer additional product information. You can change the shape, outline width, color, and fill type of the QR code pixels, change the background color and fill type, and more. You can also choose which information to include in the QR code, such as URL, email address, phone number, SMS, Contact, Calendar event, and Geo location. There's also a Validate option, which analyzes the QR code to ensure it can be read by QR code readers, smartphones, and scanners.



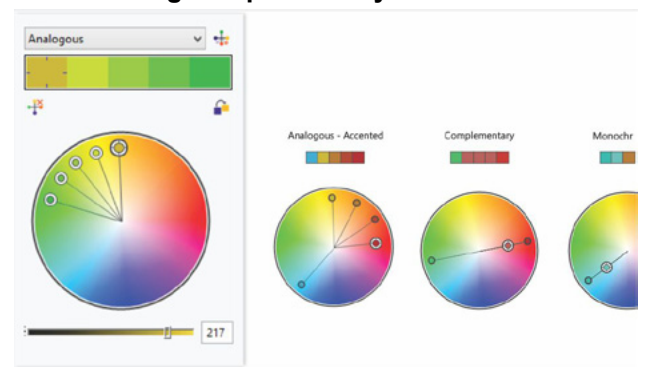
Enhanced! Color Styles docker:



The enhanced Color Styles docker makes it easier to view, arrange, and edit color styles and color harmonies. You can now specify the brightness value for a color, and constrain the Harmony Editor's selector ring, which preserves saturation and hue while you adjust the color. The Color Styles docker also offers convenient View Options, including Hint View, which provides a visual indication of all document objects that use a specific color style, and Page Sorter, which displays thumbnails of all pages in a document and previews changes as you adjust colors.

indication of all document objects that use a specific color style, and Page Sorter, which displays thumbnails of all pages in a document and previews changes as you adjust colors.

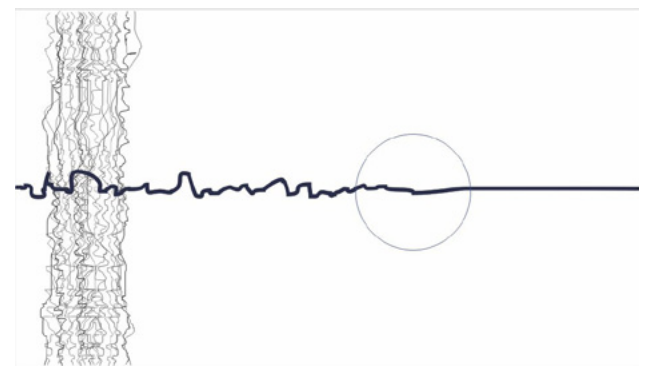
New! Finding complementary colors:



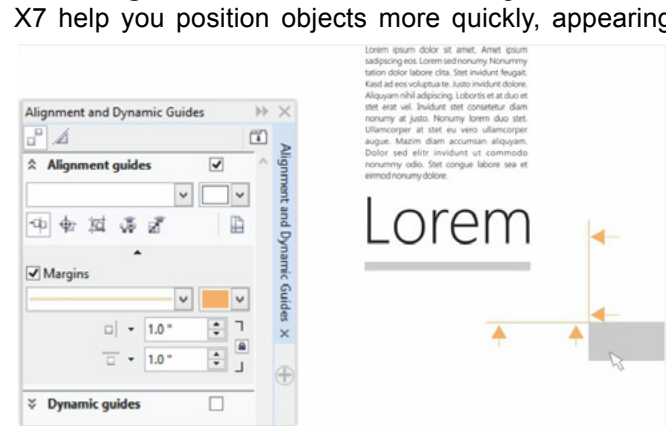
With new harmony rules, you can snap all colors in a color harmony to a rule-based system, which lets you modify those colors while preserving the color harmony. You can also use harmony rules to create a new color harmony from scratch. There are six harmony rules that produce five-color harmonies based on a selected color swatch.

New! Smoothing objects:

CoreIDRAW X7 provides a new Smooth tool that you can use to remove jagged edges and reduce nodes in curve objects. You can control the smoothing effect by varying the size of the brush nib, the speed at which the effect is applied, and by using the pressure of your digital pen or stylus.



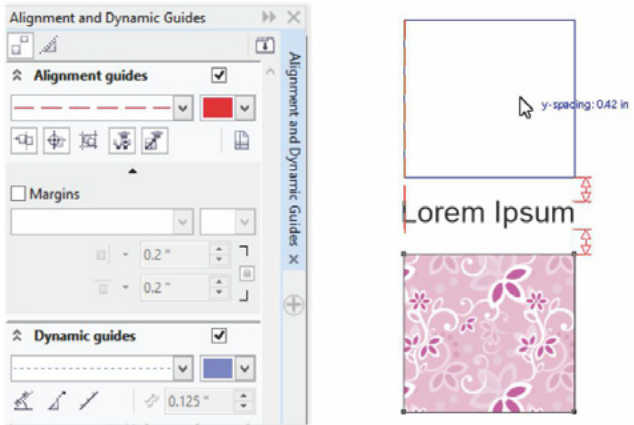
New! Alignment Guides:



The new Alignment Guides in Corel PHOTO-PAINT X7 help you position objects more quickly, appearing on the fly with suggested alignments to other nearby objects. You can use the new Alignment Guides docker to view, set up, and modify alignment guides. And with new margin alignment guides, you can now specify inset and offset values when aligning an object relative to another object.

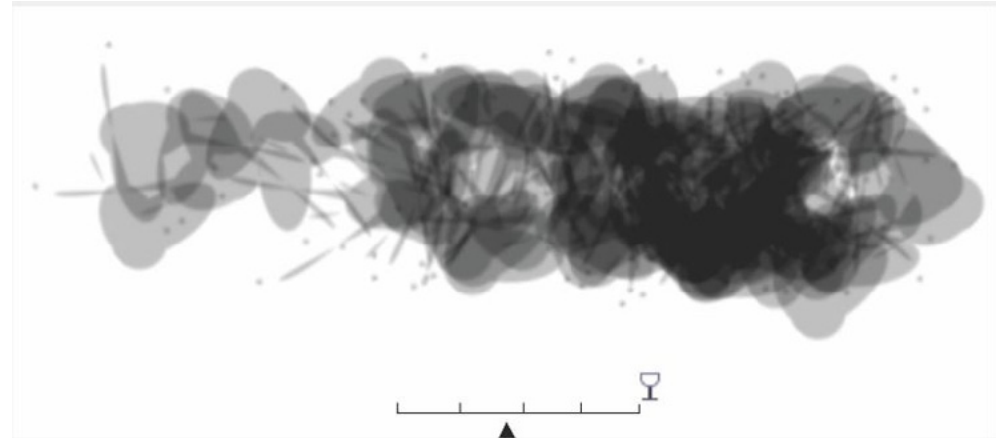
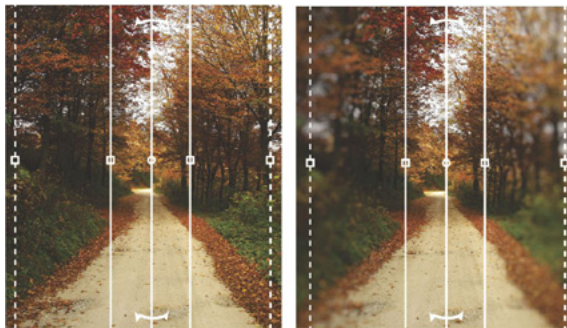
New! Alignment and Dynamic Guides

Alignment and Dynamic Guides docker: You can use the new Alignment and Dynamic Guides docker to access and modify the configuration of these guides more quickly. With alignment guides, the new Intelligent Spacing guides make it easier to precisely position objects with the same spacing as nearby objects. Plus, the new Intelligent Dimensioning guides help you scale or rotate an object in relation to the dimensions or rotation angle of nearby objects.



New! Liquid tools: In Corel PHOTO-PAINT X7, four new, pressure-sensitive Liquid tools — Smear, Attract, Repel, and Twirl — offer fresh creative options for retouching photos. You can use these tools to reshape specific image areas to produce unique artistic effects. Each tool responds to the pressure of your digital pen or stylus, and provides options that help you control the intensity of the effect.

New! Planar Mask tool: You can use the new Planar Mask tool in Corel PHOTO-PAINT X7 to define a feathered editable area along parallel lines. When combined with a blur effect, you can simulate depth of field, giving focus to a particular object while blurring areas outside the planar mask. You can modify the effect of the planar mask by moving or rotating the lines, and you can also use mask modes with the Planar Mask tool.



New! Interactive brushstroke transparency and feathering: With Corel PHOTO-PAINT X7, you can now use modifier keys to interactively adjust the transparency and feathering of brushstrokes. This lets you apply transparency and feathering on the fly, and works with the Eraser, Red-eye removal, Clone, Touch-up brush, Paint, Effect, Image Sprayer, Undo brush, and Replace color brush tools.

New! Special effects: Corel PHOTO-PAINT X7 introduces new camera effects, such as Bokeh blur, Colorize, Sepia Toning, and Time Machine to help you recreate historic photographic styles and give your images unique visual appearances. With the Bokeh blur effect, you can define an area of focus and leave the rest of the image out of focus. You can create a duotone image by using the Colorize effect to replace all colors in an image with a single hue. The Sepia Toning effect simulates a photo taken with sepia film, which is similar to grayscale except with brown tones. And with the Time Machine, you can choose from seven historic photography styles ranging from 1839 to the 1960s.



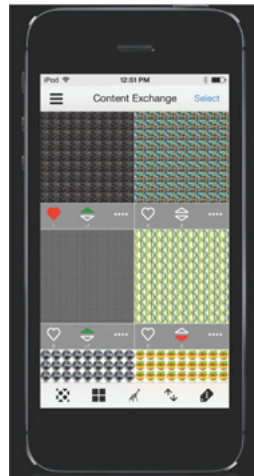
New Ways to Share



New! Content Exchange: The new Content Exchange is an online repository that integrates with Corel CONNECT and the suite's applications, making it quick and effortless to access and share vector fills, bitmap fills, and fountain fills with a community of other users.

New! Sharing fountain and pattern fills: You can now save personal fountain, vector pattern, and bitmap pattern fills and share them in the new Content Exchange, an online repository of community content that can be downloaded and is accessible to anyone with a corel.com account. You can also instantly share personally created or modified bitmap pattern fills to the new Patterns iOS app.

New! Patterns: With this free new mobile iOS7 app, you can create seamless bitmap patterns from digital photos. Available from the Apple Store for both iPhone and iPod touch, Patterns offers intuitive controls for fine-tuning the brightness, color, and luminance of your new patterns.



The default Patterns file format (FILL) is fully supported by CorelDRAW Graphics Suite X7, and can also be saved to the local Camera Roll library on your mobile device. You can also output to PNG, which can be used in other graphics applications, such as Corel® Painter®, Adobe Photoshop and Adobe Illustrator.

New! Designs: Whether you're on the go, or in the office, this new Windows 8 app offers an easy way to find and share the perfect image. Available for free from the Windows App store, you can use Designs to search for images online, including popular content providers such as iStockPhoto, fotolia, and Flickr.

You can also access the graphic design gallery on CorelDRAW.com and the Corel Painter art galleries on Facebook. With its easy-to-access trays, Designs makes it easy to save images for quick reference, reuse, and sharing. Plus, you can save your trays to Microsoft OneDrive for access anywhere, and saved trays are automatically synced with CorelDRAW Graphics Suite X7 and the new Content Exchange.

NEW!

CorelDRAW[®] Graphics Suite **X7** 

Design your way

- fresh look
- cutting-edge tools
- new workspaces

[LEARN MORE](#)



© Lin Chung Da